



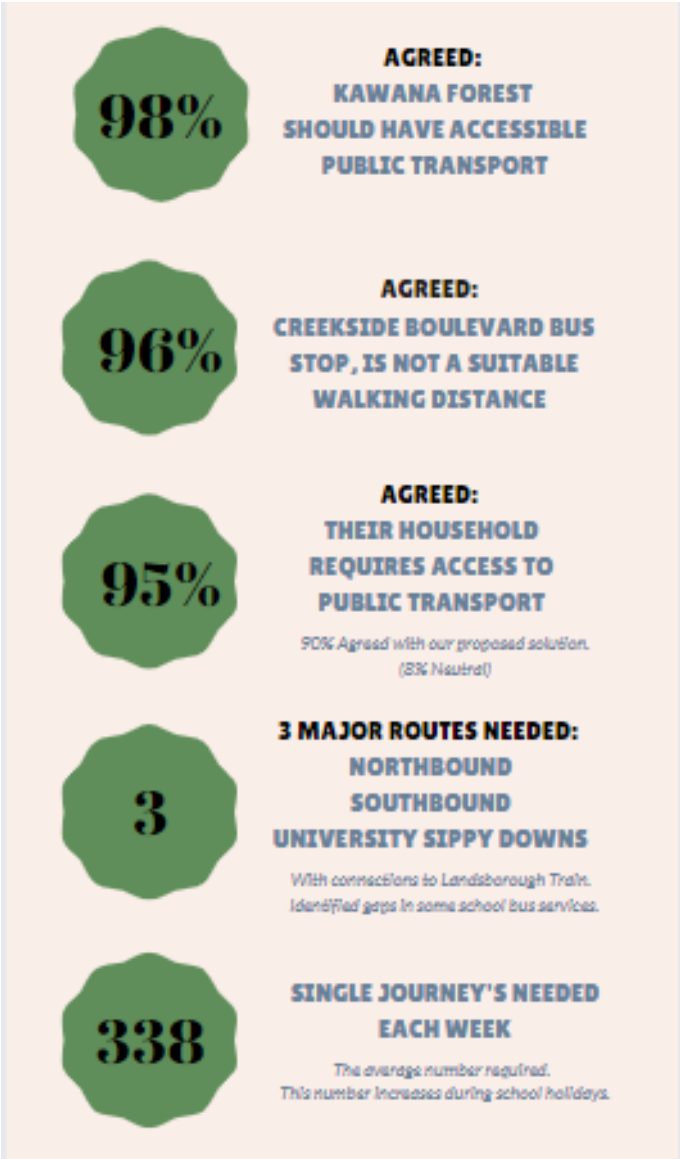
Kawana Forest

- ✓ Centrally located on the Sunshine Coast
- ✓ Well connected to major roads
 - Kawana Way/Link Road
 - Creekside Boulevard
 - 7 min drive to Bokarina beach
 - 7 min drive to M1 onramp to Brisbane
 - 4 min drive to SCUH



The home of:

- Over 550 Residential houses
- IRT – Retirement Village & Aged Care Facility
- Community Meeting Place
- Pacific Lutheran College (Prep-Y12)
- Kawana Eagles (AFL Junior Club)
- Caloundra Soccer Club
- Local Business (Café, Hairdresser, Law Firm, Beauty, Engineer, Corner Store)
- Climate Trail Walk



Survey conducted October 2020

- ✓ 21% of Households in Kawana Forest Responded within 1 week to a Facebook post with survey link
- ✓ = Over 118 unique households.
At the time we only had 220 followers, currently 353 followers
- ✓ We have been engaged with State government representatives from Kawana & Caloundra and with local government SCC councillors Division 3 Cr Peter Cox and Division 1 Cr Rick Baberowski – Deputy Mayor & Transport Portfolio

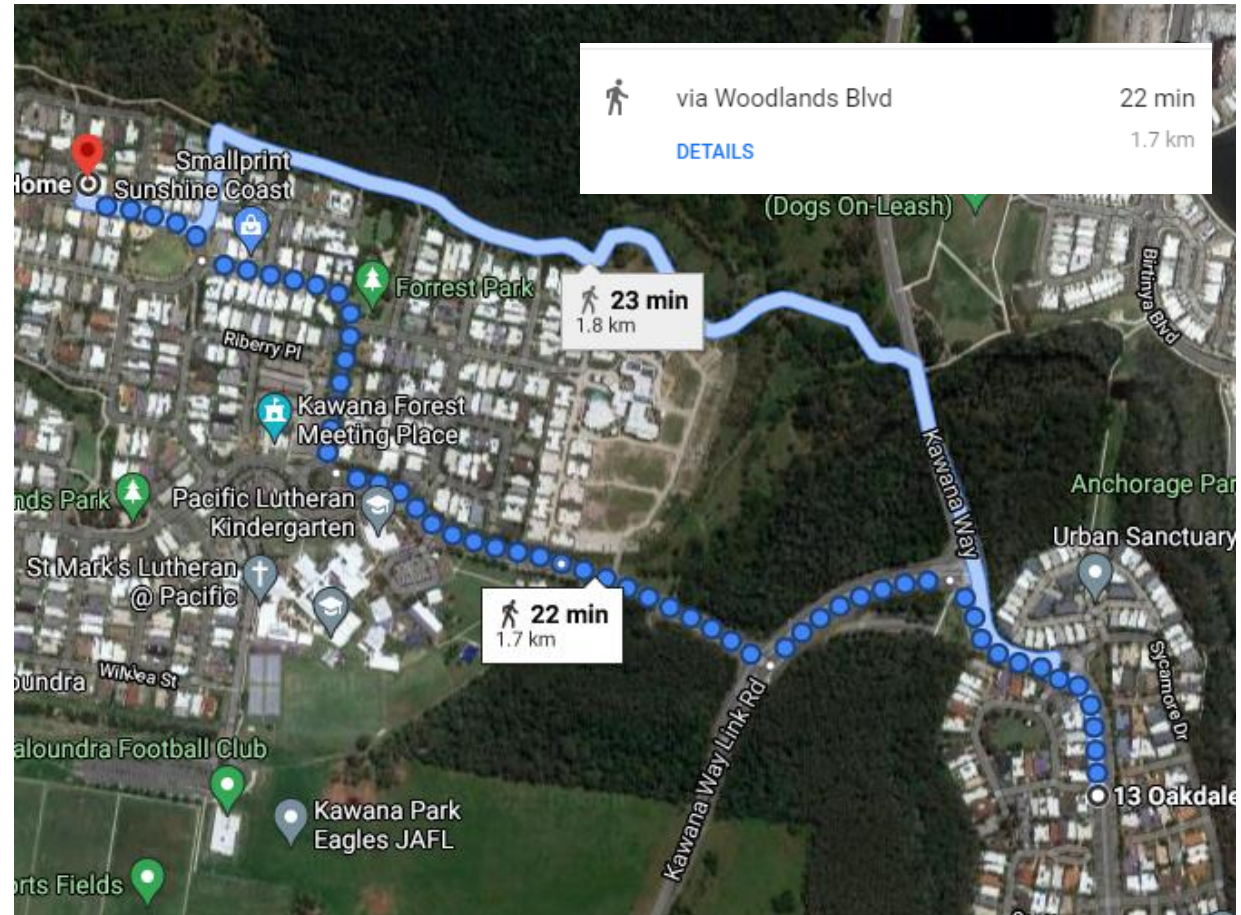
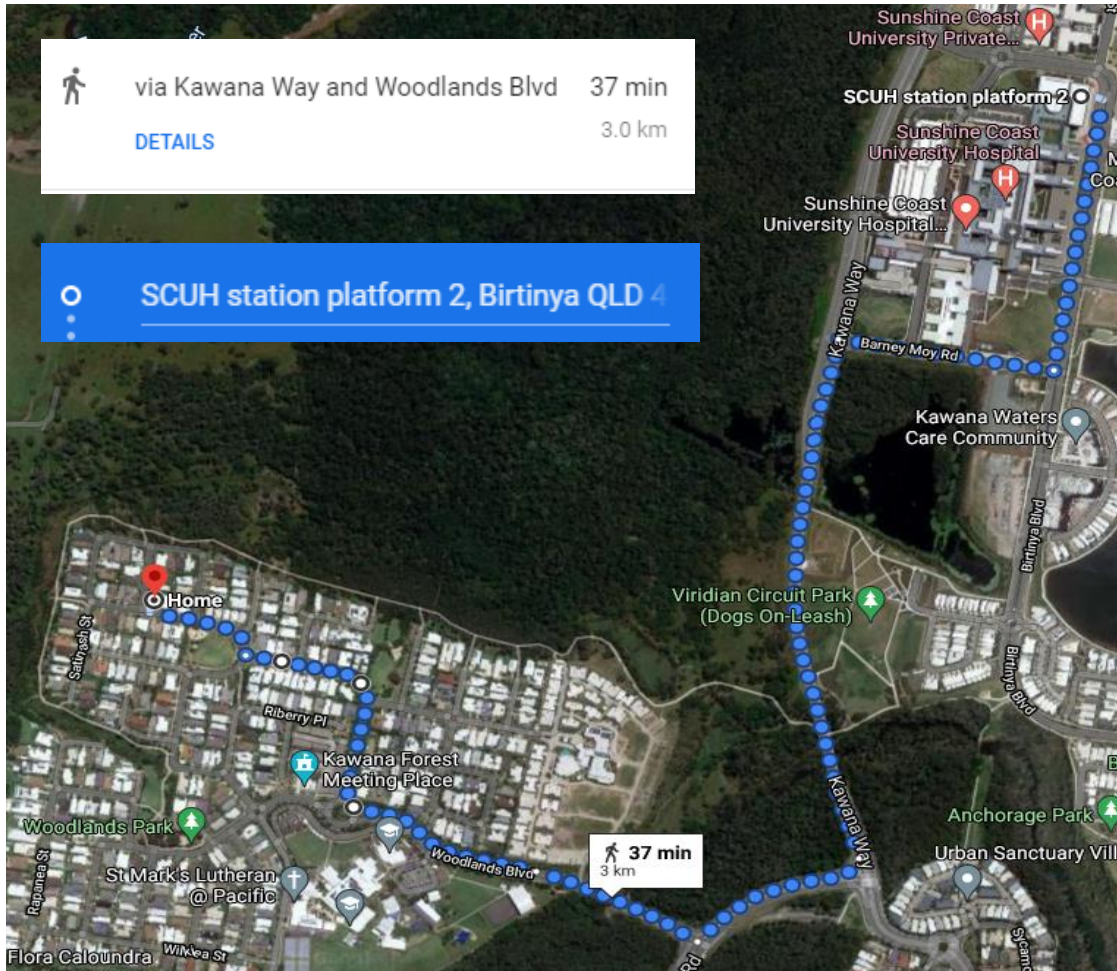
Closest Bus stops

“Walking in QLD report”
84% of trips to public transport are made by walking.
Most people are prepared to walk 10 mins or 800m for high frequency or direct services.
Or for less frequent indirect services 5mins or 400m

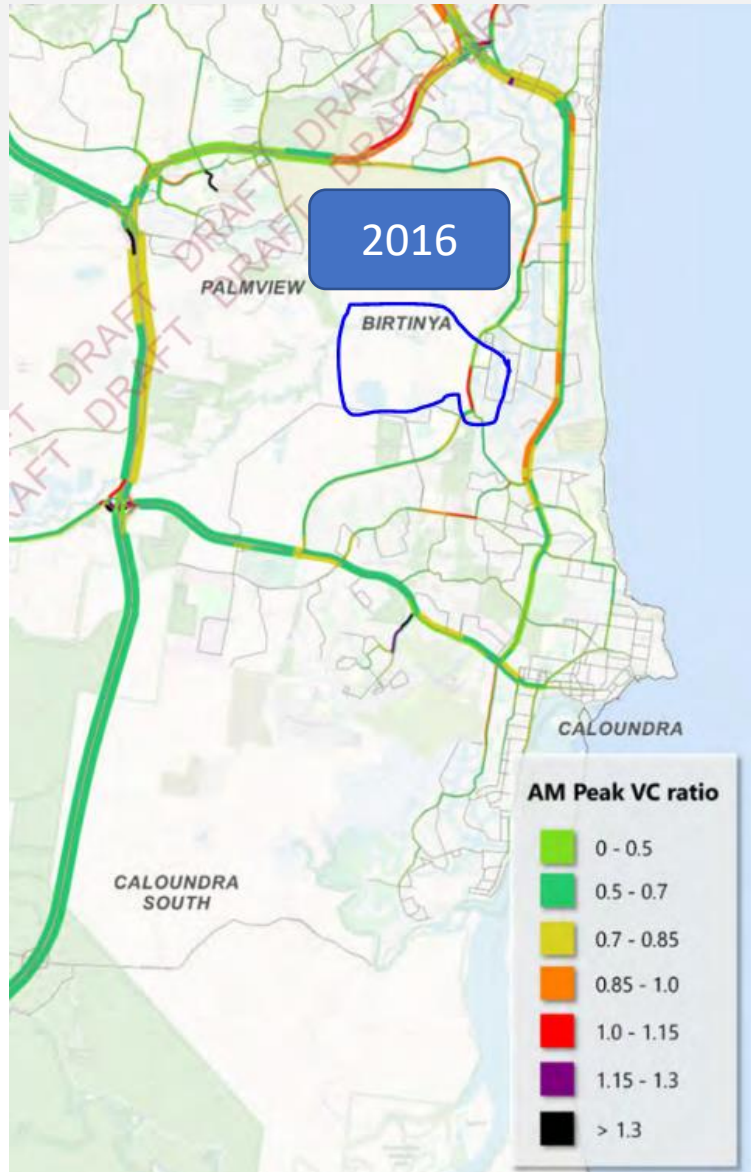
1. SCUH – 37min walk or 3km

OR

2. Creekside Blvd – 22min walk or 1.7 km



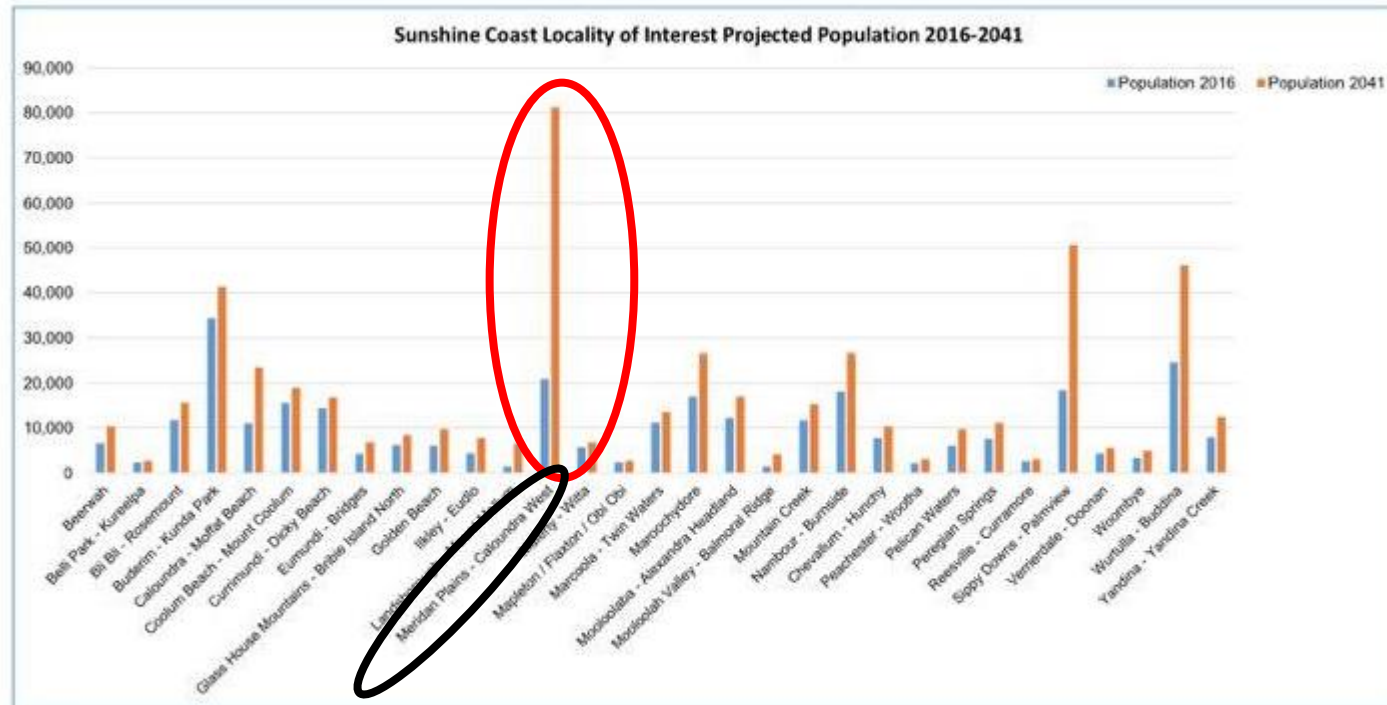
Congestion 2016 V Predicted 2041



656
Private
Vehicles
exited the
estate
within 1
hour

The entry to our estate, is one of the most heavily congested areas on the Sunshine Coast.

Projected Population 2016- 2041



Meridan Plains

Is within the highest projected population growth area on the Sunshine Coast.

Current bus usage

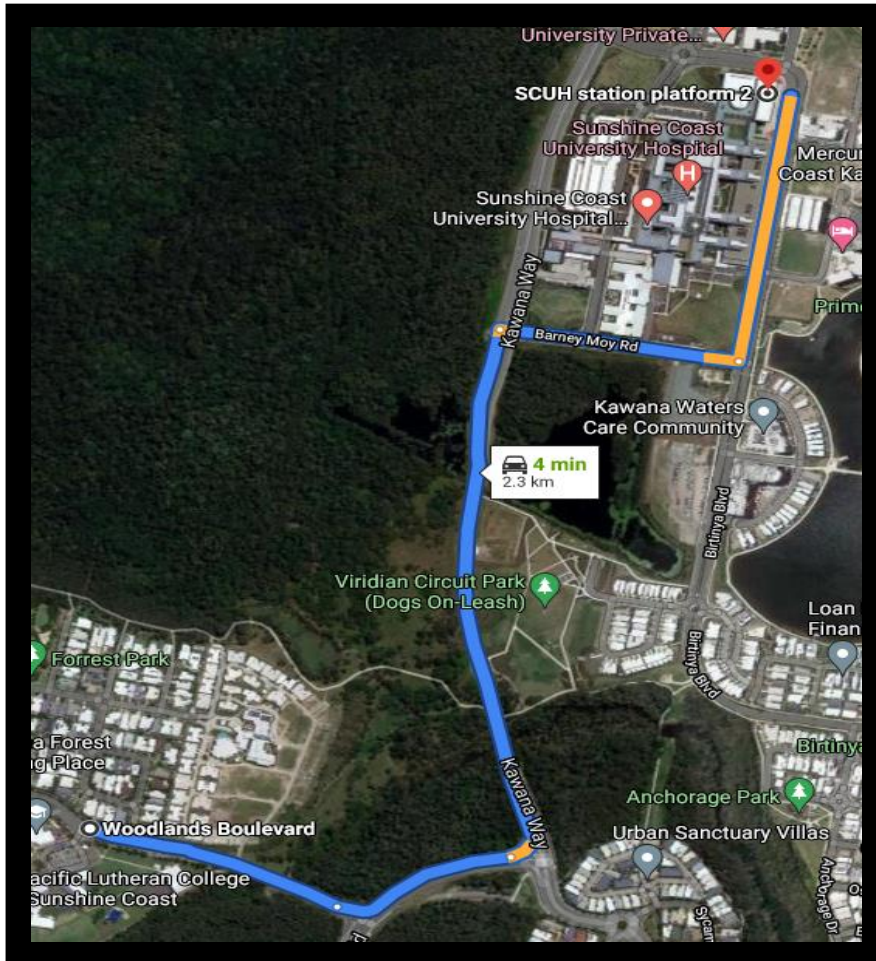
- 19 Students boarded bus #5733 (4 Talara, 9 Meridan, 4 Unity, 2 Kawana)
- 4 Students were waiting for bus #5713 (to Caloundra SH due 10 mins later)
- 9 School Buses entered the estate within 1 hour (between 7.45am-8.45am, mix of 6 private school & 3 CDC)

This would have to be one of the highest serviced school bus stops on the Sunshine Coast

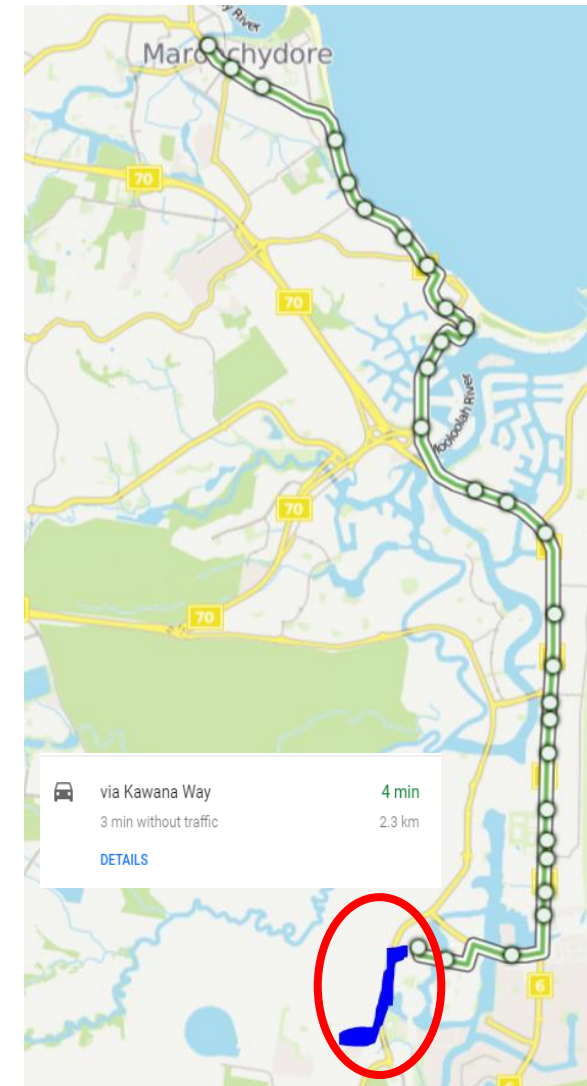


Proposed bus route

adding 1 stop to the start and end of journey



- No additional journey time for travellers
- Bus #611 would travel an additional 2.4km or 4mins to the existing bus stop in the estate. (turning at the first roundabout)
- This would allow for a direct connection north to Maroochydore
- Or a connection via SCUH south to Caloundra or to the Sunshine Coast University
- Minimal construction cost



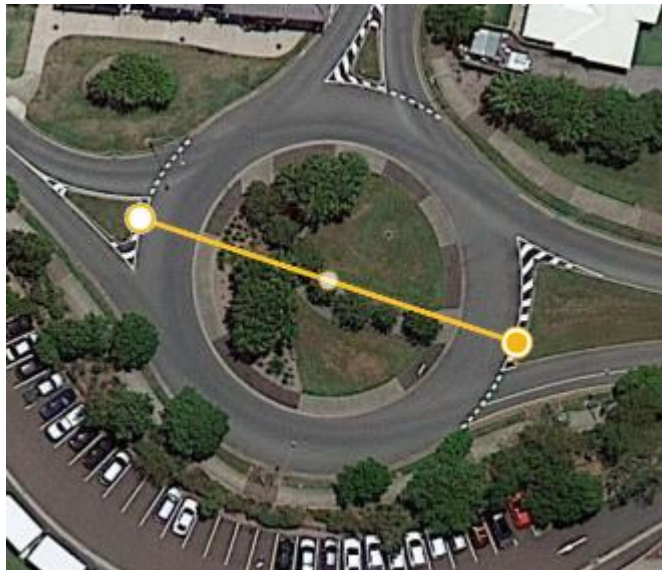
Plus, we would like to see investment into the CAMCOS corridor as the preferred option for SCMT with connecting bus services to the entire Sunshine Coast region



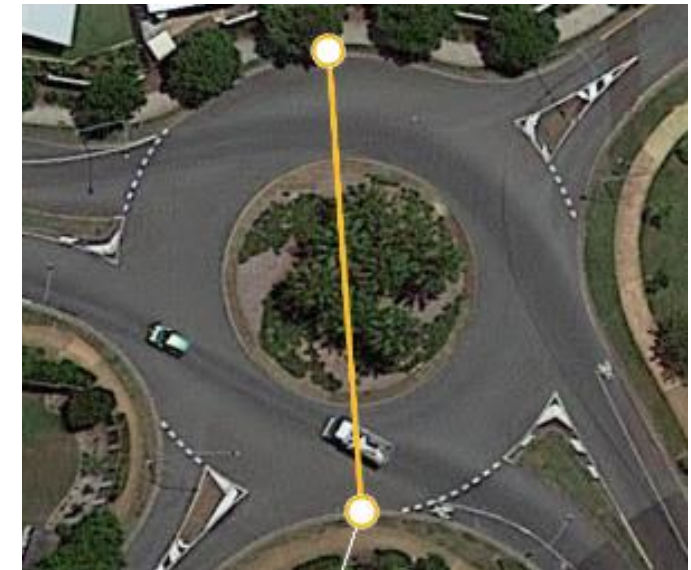
Comparison

Kawana Forest	V	Creekside Boulevard Currimundi
Over 550 plus IRT, school, sport fields	Residential Houses	Over 400
0	Bus Stops	3

Kawana Forest Roundabout V Creekside Boulevard Roundabout Comparison



Left: ←	Right: →
Kawana Forest	Creekside Blvd
32m wide middle island	23m wide middle island
48m wide outside edge	44.37m wide outside edge



24 May 2021: Cr Baberowski's office asked the SC Council's Transport Strategy and Policy team to review. The Design Officer ran the bus turning template and advised that there should be no issues for TransLink services to the first roundabout.